

FibeAir[®] 3200T

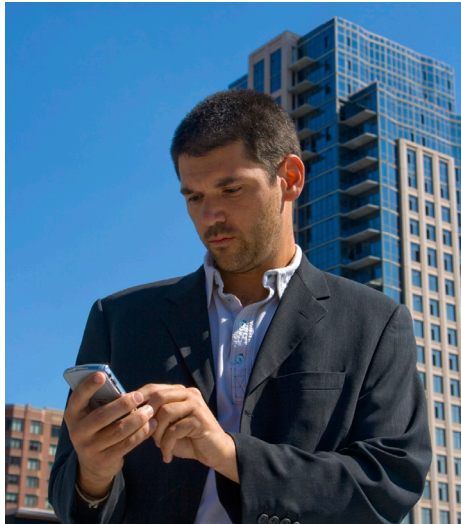
A next generation wireless trunk solution



Ceragon's FibeAir 3200T was designed to provide maximum availability for backbone networks. Featuring N+1 switching protection, embedded space diversity and ultra high power, operators can greatly improve hop length, system performance and availability.

- High transmit power
- Longer distances
- Smaller antennas
- N+1 Carrier protection
- Low installation costs
- Built-in diversity
- IF combining
- Enhanced resiliency
- End-to-end solution
- Frequency range of 6-11 GHz
- Full indoor structure
- SDH/PDH & IP interfaces

A Next Generation Wireless Trunk Solution



Introducing FibeAir® 3200T

Ceragon's FibeAir 3200T provides high capacity connectivity using multiple STM-1, OC-3, FE or GbE, nxE1/T1 enabling the deployment of voice and data services for rapidly growing networks. Quickly and easily deployed, the FibeAir 3200T trunk system represents an economical alternative to fiber optic lines and is a highly reliable point-to-point backbone transmission system.

The FibeAir 3200T long haul trunk solution includes value added features such as full TDM and IP capabilities and unique flexibility options. This unique solution is ideal for both all indoor and split-mount installations using a single hardware design, powering carriers with maximum flexibility to meet the wide range of custom requirements. Packed with the latest generation technology and cost saving features, FibeAir 3200T is your best trunk radio choice for effective long-haul SDH, SONET, ATM, PDH and IP networks.

Applications

Mobile & Fixed Networks

Quickly deployed and optimized for long-haul trunk applications, FibeAir 3200T is ideal for growing networks which demand very high capacity with multiple STM-1/OC-3 or FE/GbE carriers. With scaleable capacity up to 10 carriers, operators can easily expand their networks to meet the huge increase in users, cell sites and bandwidth-hungry applications.

The FibeAir 3200T system offers smooth migration from PDH to SONET/SDH networks and next generation IP, with capacities of nxDS3, nxE1/T1, FE, GbE and (N+1) x155Mbps. Applications include voice, Internet, PABX, DSL, video, VoIP and others.

Broadcast Networks

With very high capacity and ultra-long distance radio hop capability, FibeAir 3200T is an economic choice for cross-country digital broadcast connectivity. The scalability and reliability of FibeAir solutions are ideal for high-quality transport of contribution and distribution services. Applications include Digital Video Broadcast, TV, radio and telemedicine.

Government & Emergency Services

Ceragon's quality products meet the high-level demands of government customers by providing rapidly deployed secure and long distance transmission, in a compact, light weight, scalable solution. Applications include military deployments over long distances, border-to-headquarter communication, disaster recovery, temporary installations, surveillance, and monitoring.

Utilities & Private Networks

FibeAir 3200T provides high-capacity connectivity for enterprise LAN and PBX systems. Its hardware optimization significantly reduces equipment requirements for low frequency long haul radio hops resulting in lower operation and maintenance costs. FibeAir 3200T is ideal for utility operators such as: gas, water, oil, electricity, transportation companies, corporate enterprises, education campuses, hospitals, banks and others.

Applications include TDM connectivity, Carrier Ethernet, IP LAN connectivity, (FE, GbE), VoIP, client-server application, remote storage, video conferencing, infrastructure redundancy and more.

System Overview

A member of the FibeAir family, FibeAir 3200T provides ultra high capacity data transmission over long distances. FibeAir 3200T delivers capacities up to 10 x Carriers in one rack and operates in the frequency range of 6-11 GHz.

For SDH/SONET the FibeAir 3200T features N+1 switching. This allows for maximum transmission efficiency, which reduces fading effects by early error detection and guarantees reliable, uninterrupted services. The combination of N+1 switching, extremely high transmit power and inherent Space Diversity significantly enhance the resiliency and availability of the link.

The FibeAir 3200T can be installed as an All-Indoor solution or as a Split-Mount, unique for high-capacity trunking solutions, with the RFUs (Radio Frequency Units) installed near the antenna.

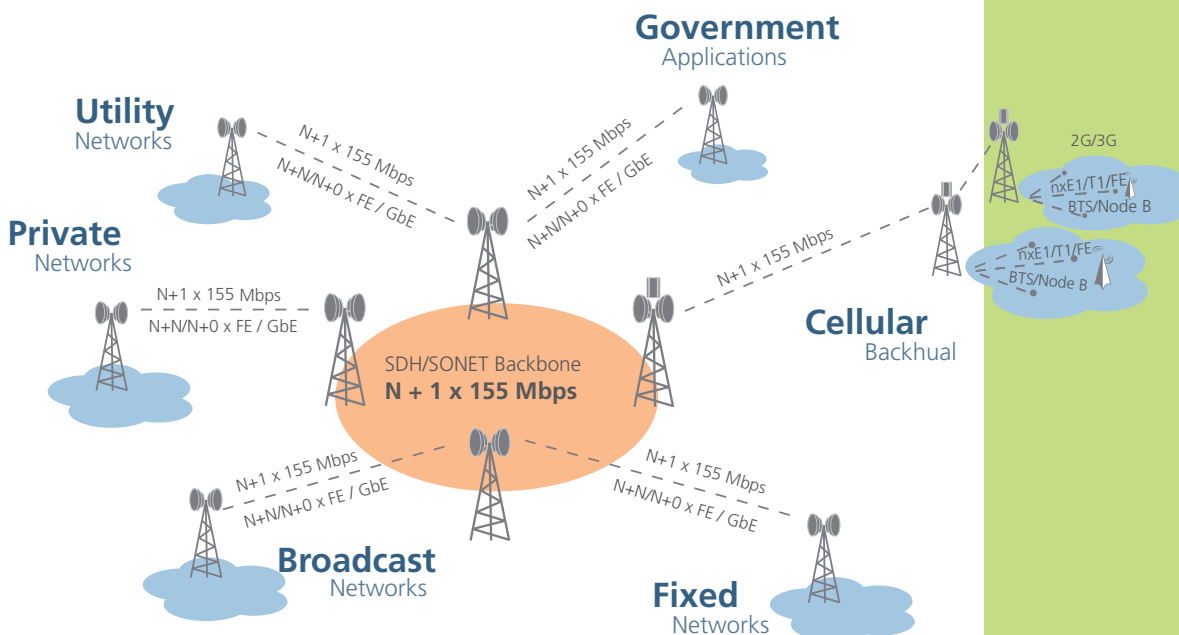
For all IP applications, FibeAir 3200T supports up to 10 high capacity Ethernet radios in a single link assembled in an All-Indoor installation.

Designed in the same modular and scaleable architecture as the rest of the FibeAir product family, FibeAir 3200T is based on a "pay-as-you-grow" concept for seamless network expansion. Network expansion can take place easily, making use of existing FibeAir products, thereby reducing initial investments.

With its reliable fiber-like quality and protection capabilities, FibeAir 3200T is a dependable telecommunications solution for different network topologies, such as chain, ring, mesh and star.

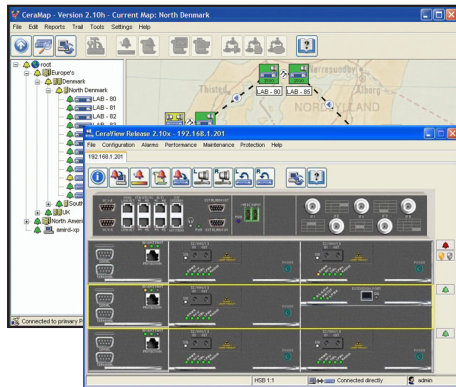
Key Features

- Full indoor structure
- Up to 9+1 STM-1/OC-3 carriers in one rack for TDM networks
- Up to 10 Ethernet carriers
- Ultra High transmit power: up to 33 dBm
- Embedded SD using Enhanced IF combining
- Easy expansion from 1+1 to 9+1 STM-1/OC-3 or up to 10 Ethernet Carriers
- Built-in XPIC with Co-Channel Dual Polarization (CCDP)
- Frequency range of 6-11 GHz
- Compact design
- All-indoor & Split mount installation using same hardware
- Variety of interfaces including SDH/PDH & IP



End-to-End Network Management

Ceragon provides state-of-the-art remote management based on SNMP. The Ceragon management applications are written in Java code and enable management functions at both the element and network levels. The applications run on Windows 2000/2003/XP/Vista and Sun Solaris.



CeraView® is Ceragon's SNMP-based EMS (Element Management System) that enables the operator to perform element configuration, RF, Ethernet and TDM performance monitoring, remote diagnostics, alarm reports and more. CeraView integrates with different 3rd party NMS (Network Management System) platforms to provide end-to-end system management.

PolyView™ is Ceragon's NMS server that includes CeraMap, with a powerful user-friendly client graphical interface. PolyView can be used to update and monitor network topology status, provide statistical and inventory reports, download software and configure elements in the network. In addition, it can integrate with Northbound NMS platforms, to provide enhanced network management.

Ceragon Networks Ltd.

Ceragon Networks Ltd. (NASDAQ and TASE: CRNT) is a leading provider of high capacity wireless backhaul solutions that enable fiber-like connectivity for SONET/SDH networks, next generation IP-based networks and hybrid networks. Ceragon's FibeAir® family of products support all wired and wireless access

technologies and address Service Providers' need to cost-effectively build-out and scale their networks to meet increasing demands for bandwidth and premium services. Ceragon's solutions are deployed by more than 150 service providers of all sizes, as well as in hundreds of private networks, in 85 countries.

Ceragon Networks

Corporate Headquarters

Ceragon Networks Ltd.
Tel Aviv, Israel
Tel: +972-3-645-5733
Fax: +972-3-645-5499

EMEA

Ceragon Networks
(UK) Limited
Redditch, UK
Tel: +44-(0)-1527-591900
Fax: +44-(0)-1527-591903

Asia Pacific

Ceragon Networks APAC
(Singapore) Ltd.
Singapore
Tel: +65-6339-3110
Fax: +65-6339-1310

North America

Ceragon Networks, Inc.
New Jersey, USA
Tel: +1-201-845-6955
Fax: +1-201-845-5665
Toll free: 1-877-FIBEAIR

Latin America

Ceragon Networks,
S.A. de C.V.
Mexico D.F, Mexico
Tel: +52-55-5663-2914
Fax: +52-55-5663-2841