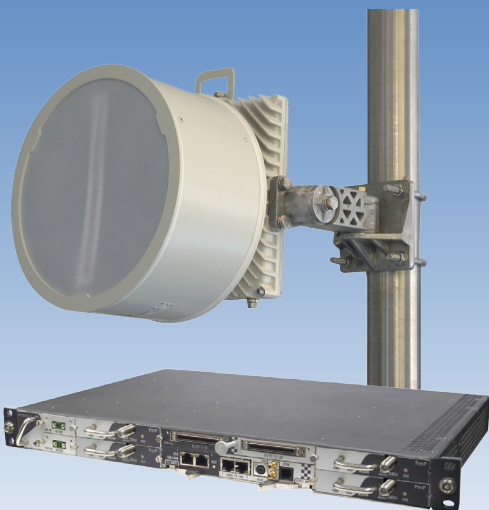




WALKair[®] 5000

WALKair 5000 is a small footprint base station (1U) with simple and flexible mounting capabilities. Configured as a single sector or a multi sector base station, WALKair 5000 is capable of serving multiple terminal stations with assured Quality of Service (QoS).

WALKair 5000
Outdoor Unit – ODU
(shown with highgain sectoral antenna)



WALKair 5000 Indoor Unit
(in 4 - sector configuration)

Overview

WALKair 5000 is a carrier-class Point to Multi Point (PtMP) platform for both backhaul and access applications. Leveraging years of experience and industry leadership, WALKair 5000 incorporates technologically advanced features for optimized bandwidth utilization and capacity, providing best value for operators.

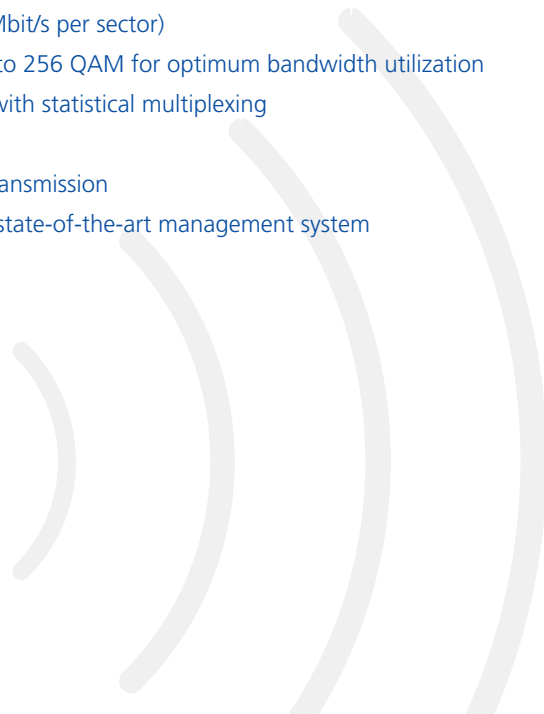
Alvarion's 4G networks power the industry's most extensive customer base with end-to-end solutions that give our customers a competitive edge. Alvarion's WALKair product line presents an optimal solution for service providers to provide their corporate customers with a solid infrastructure for productivity and growth.

Best fit for

- Broadband access solutions
- Backhaul applications for WiMAX networks
- Backhaul applications for 2G / 3G / LTE networks
- Utility applications for special purpose communication and control networks

Product Highlights

- Highly-compact multi-sector solution, accommodating up to four sectors in a low-profile (1RU) indoor unit
- Variable configurations supporting up to 4+0 (unprotected) or 2+2 (protected) deployments
- Industry-leading capacity (180 Mbit/s per sector)
- Hitless adaptive modulation up to 256 QAM for optimum bandwidth utilization
- Dynamic bandwidth allocation with statistical multiplexing
- Carrier-grade reliable system
- Low latency for time-sensitive transmission
- Managed by WALKnet 5000, a state-of-the-art management system



Headquarters

International Corporate HQ
Email: corporate-sales@alvarion.com

North America HQ
Email: n.america-sales@alvarion.com

Sales Contacts

Australia:
anz-sales@alvarion.com

Asia Pacific:
ap-sales@alvarion.com

Brazil:
brazil-sales@alvarion.com

Canada:
canada-sales@alvarion.com

Caribbean:
caribbean-sales@alvarion.com

China:
cn-sales@alvarion.com

Czech Republic:
czech-sales@alvarion.com

France:
france-sales@alvarion.com

Germany:
germany-sales@alvarion.com

Italy:
italy-sales@alvarion.com

Ireland:
uk-sales@alvarion.com

Japan:
jp-sales@alvarion.com

Latin America:
lasales@alvarion.com

Mexico:
mexico-sales@alvarion.com

Nigeria:
nigeria-sales@alvarion.com

Philippines:
ph-sales@alvarion.com

Poland:
poland-sales@alvarion.com

Portugal:
sales-portugal@alvarion.com

Romania:
romania-sales@alvarion.com

Russia:
info@alvarion.ru

Singapore:
asean-sales@alvarion.com

South Africa:
africa-sales@alvarion.com

Spain:
spain-sales@alvarion.com

U.K.:
uk-sales@alvarion.com

Uruguay:
uruguay-sales@alvarion.com

For the latest contact information
in your area, please visit:
www.alvarion.com

Technical Specifications

Operation

Bands:

- 10.5 / 26 / 28 GHz

Channel Size:

- 28 / 14 / 7 / 3.5 MHz

Configuration

- 1+0 / 1+1 / 2+0 / 2+2 / 4+0

Interfaces

- 2 x GbE (optical or electrical),
for native Ethernet / IP traffic
- 32 x E1, for TDM traffic
- 2 x Fast Ethernet management ports
- Sync IN / OUT
- External I/O

Mechanical

Dimensions (H x W x D):

- IDU: 44.5 mm (1RU) x 482.6 mm x 284.7 mm
- ODU: 285 mm x 263 mm x 75 mm

Weight:

- IDU: 8.4 kg (fully equipped)
- ODU: 2.5 kg (standalone), 5 kg (with attached antenna)

Electrical

Operating DC Voltage:

- 40 V to -60 V (-48 V typ.)

Power Consumption, Max.:

- 85 W plus 15 W per interconnected outdoor unit

Environmental

Operating Temperature:

- IDU: -5 °C to +45 °C
- ODU: -50 °C to +60 °C

Relative Humidity (RH):

- 0% to 95%, non-condensing

Standards

Radio:

- ETSI EN 302 326- /1 v1.2.2, Annex E /2 /3
- ETSI TS 102 123

TDM Synchronization:

- ITU-T G.783 / G.811 / G.812 / G.813 / G.823 / G.825

EMC / EMI:

- ETSI EN 301 489-4 v1.3.1

Electrical Safety:

- EN 60950-1 (2006)
- EN 50385 (2002)

Environmental:

- ETSI EN 300 019-2-3 v2.2.2:2003, Class 3.2 (Operation IDU)
- ETSI EN 300 019-2-4 v2.2.2:2003, Class 4.1E (Operation ODU)
- ETSI EN 300 019-2-2 v2.1.2:1999, Class 2.3 (Transportation)
- ETSI EN 300 019-2-1 v2.1.2:2000, Class 1.2 (Storage)

Modulation	Net Sector Throughputs (Mbit/s)	
	28 MHz	14 MHz
256 QAM	140.0	70.0
64 QAM	102.0	51.0
16 QAM	68.0	34.0
4 QAM	34.0	17.0
4 QAM 2/3	22.5	11.5

Modulation	Ranges (km) ⁽¹⁾					
	10.5 GHz Band		26 GHz Band ⁽²⁾		28 GHz Band ⁽²⁾	
	28 MHz	14 MHz	28 MHz	14 MHz	28 MHz	14 MHz
4 QAM 2/3	20.0	20.0	6.0	6.7	5.2	5.6
4 QAM	20.0	20.0	6.0	6.7	5.2	5.6
16 QAM	11.1	14.8	6.0	6.7	5.2	5.6
64 QAM	5.5	7.5	4.8	6.0	4.0	5.1
256 QAM	1.8	2.5	2.6	2.9	1.7	2.3

⁽¹⁾ Alvarion's 2 ft. (60 cm) Terminal Station antennas.

⁽²⁾ Alvarion's high-gain Base Station antennas.

About Alvarion

Alvarion (NASDAQ:ALVR) is a global 4G communications leader with the industry's most extensive customer base, including hundreds of commercial 4G deployments. Alvarion's industry leading network solutions for broadband wireless technologies WiMAX, TD-LTE and WiFi, enable broadband applications for service providers and enterprises covering a variety of industries such as mobile broadband, residential and business broadband, utilities, municipalities and public safety agencies. Through an open network strategy, superior IP and OFDMA know-how, and ability to deploy large scale end-to-end turnkey networks, Alvarion is delivering the true 4G broadband experience today (www.alvarion.com).



© Copyright 2011 Alvarion Ltd. All rights reserved. Alvarion® its logo and all names, product and service names referenced herein are either registered trademarks, trademarks, tradenames or service marks of Alvarion Ltd. in certain jurisdictions. All other names are or may be the trademarks of their respective owners. The content herein is subject to change without further notice.